

WARNEX: enhancing textures

TEXTURE FORMING:

The "spattered texture" is the result of 2 coatings which are applied in a sequence of 15 – 20 minutes* between the base and the spattered coating:

I. CONDITIONS FOR THE BASE COATING:

Nozzle diameter: 0,078 inch 2,0 mm
Airpressure: 28 – 57psi 2 – 4 bar
Materialpressure: 28 – 71 psi 2 – 5 bar
Spraying Distance: 1 ft 30 cm

II. CONDITIONS FOR THE SPATTERED COATING:

Nozzle diameter: 0,078 inch 2,0 mm
Airpressure: 7 – 21psi 0,5 – 1,5 bar
Materialpressure: 28 – 71 psi 2 – 5 bar
Spraying Distance: 1,3 ft 40 cm

VARIATION OF TEXTURE FINISH:

parameter	texture finish
air pressure low / high	big dots / small dots
material pressure higher	smoother surface
spraying distance with larger range	rough and more pointed
more cross coats	closer

DRYING / FORCED DRYING:

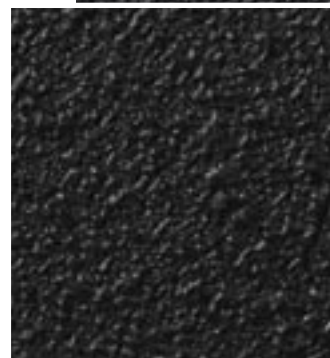
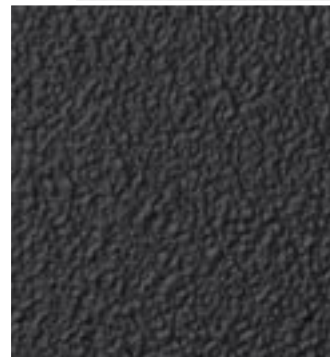
At room temperature:

dust free = 15 – 20 minutes *
ready for handling = 2 – 3 hours *
ready for packing = 1 day *
through dry = 4 days *

Oven drying:

Coated substrates may be heated at elevated temperatures of approx. 60°C to speed up drying process.

* Depending on film-thickness, temperature, humidity, air circulation, condition of the surface.



Technical Data Sheet

1 K	WARNEX texture paint	Series 74
Product description	waterborne single-component texture paint	
Binder type	water-acrylic	
Gloss level	half matt	
Solids	52 – 55 %-weight	
Recommended dry-film thickness	70 µm (base coating) 120 µm (total, base + spattered coating)	
Theoretical covering rate	5,5 m ² /kg (70 µm, base coating) 3,2 m ² /kg (120 µm, total coating)	
Practical average covering rate	1,5 m ² /kg for Loudspeaker cabinets	
VOC-rate Ø	160 g/l	
Specific gravity	1,15 – 1,20 g/cm ³	
Viscosity	initial viscosity	Rheolab 1400-1800 mPas / D701/s
	application visc.	ready for handling
Application parameters	high pressure spraying system with a paint pressure tank	
air pressure	2 – 4 bar	
material pressure	2 – 5 bar	
materialhose diameter	13 mm internal-Ø	
nozzle size	2,0 mm	
cross coats	1 – 1 ½	
spray distance	30 – 40 cm	
thinner	De-ionised / distilled water (if needed)	

Spraying equipment must be thoroughly cleaned with water directly after use.

Drying

dust free	ready for handling	through dry	thermal forced drying	oven curing
15 – 20 min	2 – 3 hours	4 days	60 min / 60° Crecirculated air	-

Depending on: air and object temperatures, film-thickness, relative humidity and air movement.

Substrate

Adhesion on woods such as MDF, birch plywood und many types of plastics. In any case it is recommended to do an adhesion test.

Extras

WARNEX texture paint has a high viscosity demanding the use of a paint pressure tank. Because of the fast initial drying, a closed system is required.

Storage

Frost free, max. 12 months in original unopened containers.